



Medium Chess Puzzle # 0099

By

G Bud Games
<https://gbud.in>

January 8, 2022

Contents

Medium Chess puzzle # 0099 - Mate in 2 moves	4
Medium chess puzzle 0099	4
Solution to medium chess puzzle 0099	5
Solution 1	5
Solution 2	8
Right moves for the solution to the medium chess puzzle 0099	10
Explanation for the moves	10
Categories of medium chess puzzle 0099	11
medium chess puzzle 0099 chart	12
How to view the solution to medium chess puzzle 0099	14
How to get help for moves in the medium chess puzzle 0099 . .	15
Play chess for free	16

List of Figures

1	Solve this medium chess puzzle 0099. Mate in 2 moves @ https://gbud.in/ghfw362	4
2	Solve this medium chess puzzle online with solution @ https://gbud.in/ghfw362	4
3	Initial board position of medium chess puzzle 0099	5
4	Rg4	6
5	g1=Q+	6
6	Rxg1	7
7	Rxg1#	7
8	Initial board position of medium chess puzzle 0099	8
9	Rg4	8
10	g1=R+	9
11	Rxg1	9
12	Rxg1#	10
13	medium chess puzzle 99 chart 1	12
14	medium chess puzzle 99 chart 2	13
15	medium chess puzzle 99 chart 3	13
16	medium chess puzzle 99 chart 4	14
17	Click the solution button to view solutions @ https://gbud.in/ghfw362	14
18	Click the help button to get help on next move @ https://gbud.in/ghfw362	15
19	Solve more medium puzzles @ https://gbud.in/chsmdpz	15

20	Solve other puzzles @ https://gbud.in/chsgppz	15
21	Play chess online for free. Solve puzzles and play with friends	16
22	Solve this puzzle online by scanning this QR code or go to the link below	17

Medium Chess puzzle # 0099 - Mate in 2 moves

Solve this medium chess puzzle and improve your chess games through improvement of your chess strategies and chess tactics.

Puzzle No : 0099

Difficulty level : medium

Description : Mate in 2 moves

Next Move : Black

Player level : Intermediate

Short URL for puzzle : <https://gbud.in/ghfw362>

Medium chess puzzle 0099

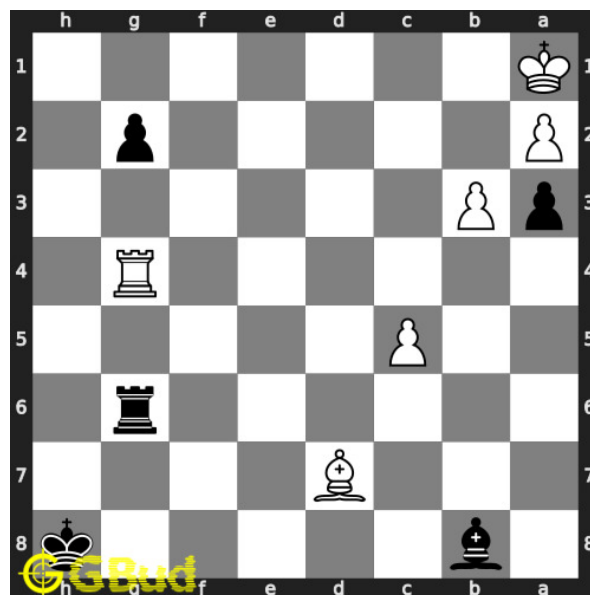


Figure 1: Solve this medium chess puzzle 0099. Mate in 2 moves @ <https://gbud.in/ghfw362>



Figure 2: Solve this medium chess puzzle online with solution @ <https://gbud.in/ghfw362>

Dont forget to check out [chess puzzles](#), [easy chess puzzles](#), [medium chess puzzles](#), [hard chess puzzles](#) and [chess puzzles collections](#) .

Solution to medium chess puzzle 0099

At this puzzle, next [move](#) is by [Black](#). The objective of the puzzle is to mate in 2 moves.

See the interactive solution at the [puzzle page](#)

Solution 1

Initial board position This is the initial board position of medium chess puzzle 0099.

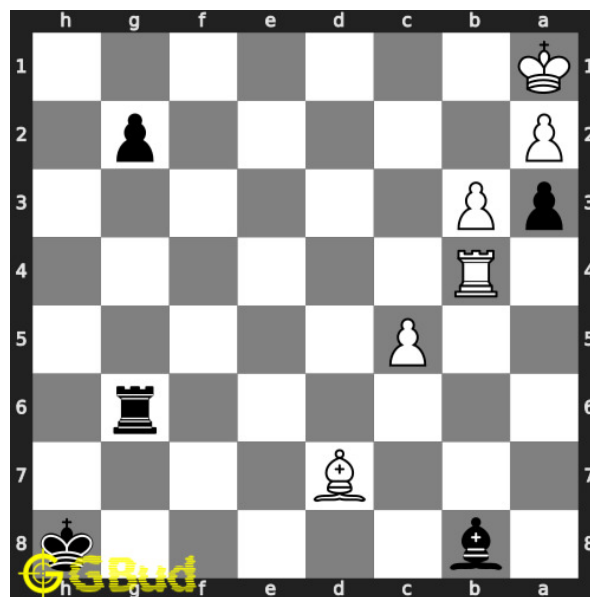


Figure 3: Initial board position of medium chess puzzle 0099

Move 1 Move by white

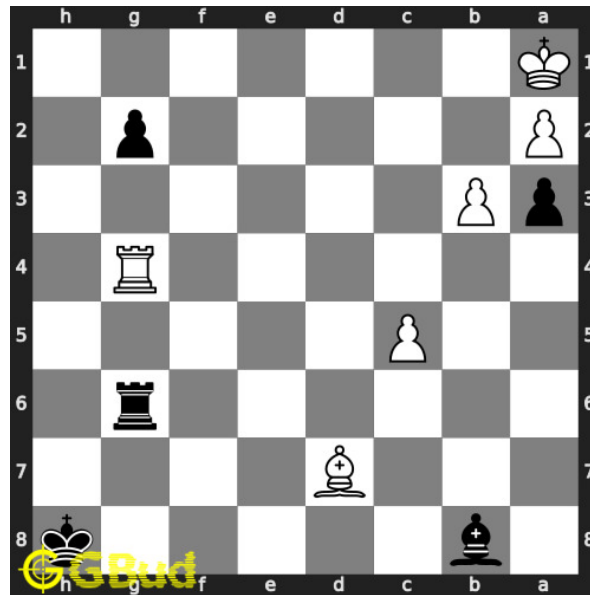


Figure 4: Rg4

this is a mistake made by the opponent. they did not realise that their king has only one free squares to move

Move 2 Move by black

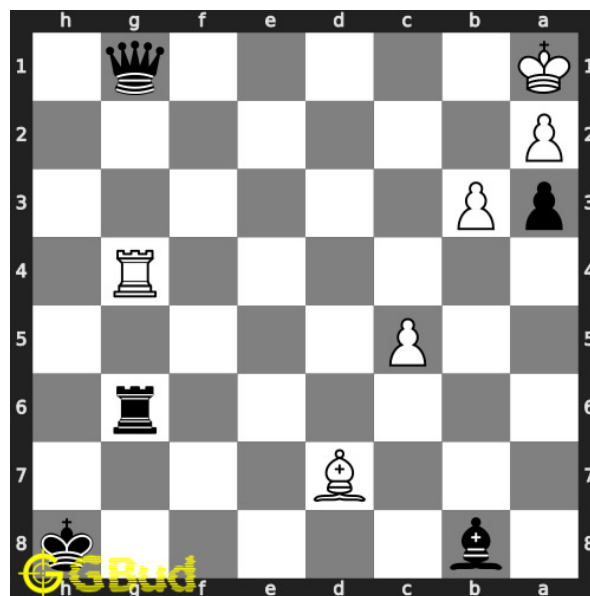


Figure 5: g1=Q+

pawn in g file is promoted to a queen and gives check. this is a sacrifice and the queen forks the king and rook

Move 3 Move by white

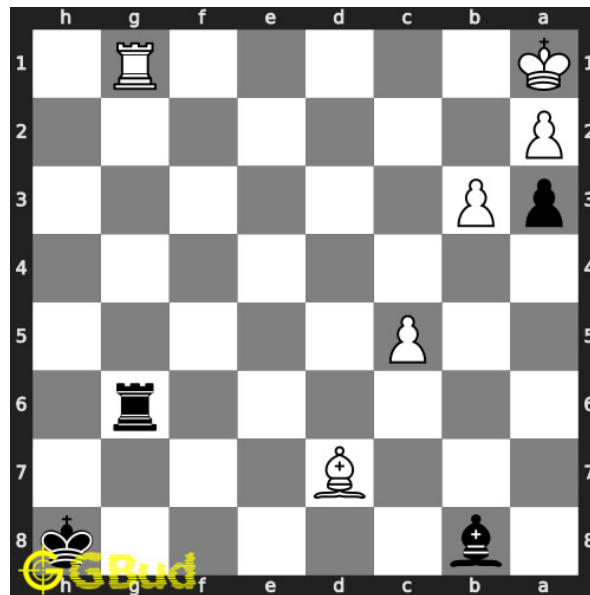


Figure 6: Rxc1

this is a zugzwang move as this forces opponent's rook to respond. opponent's rook captures your piece

Move 4 Move by black

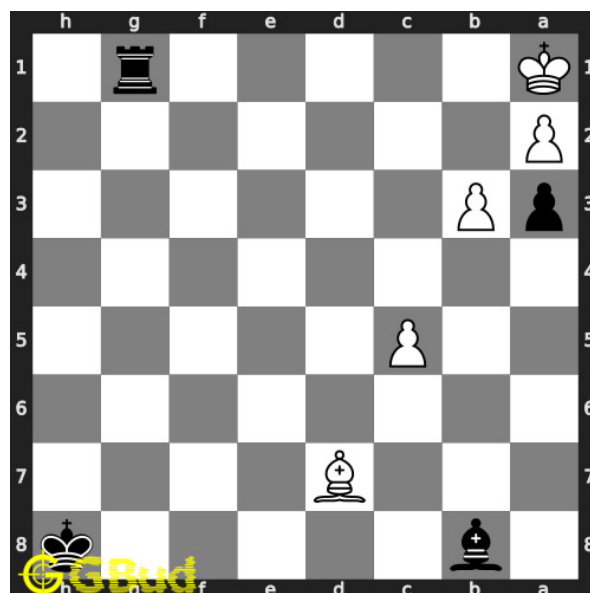


Figure 7: Rxc1#

your rook captures opponent's rook and checkmate. opponent's king can't come to b2 due to the attack from your pawn. this is how you can mate

in 2 moves.

Solution 2

Initial board position This is the initial board position of medium chess puzzle 0099.

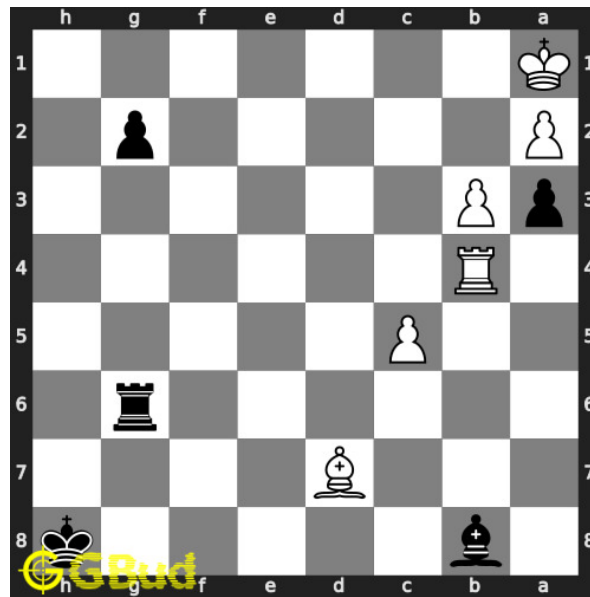


Figure 8: Initial board position of medium chess puzzle 0099

Move 1 Move by white

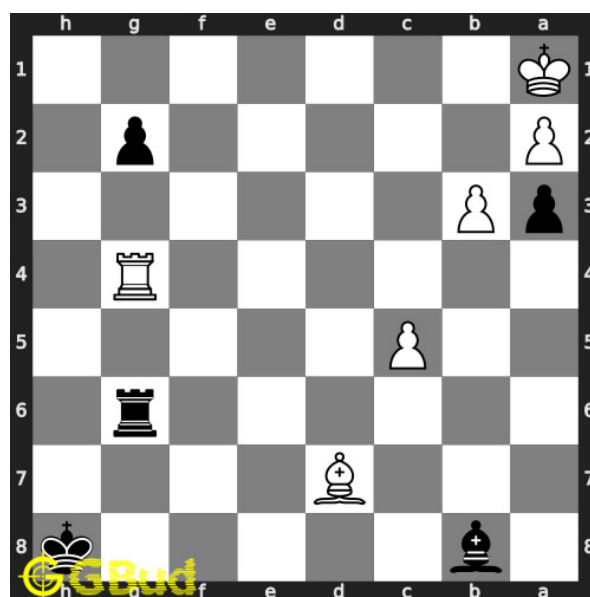


Figure 9: Rg4

this is a mistake made by the opponent. they did not realise that their king has only one free squares to move

Move 2 Move by black

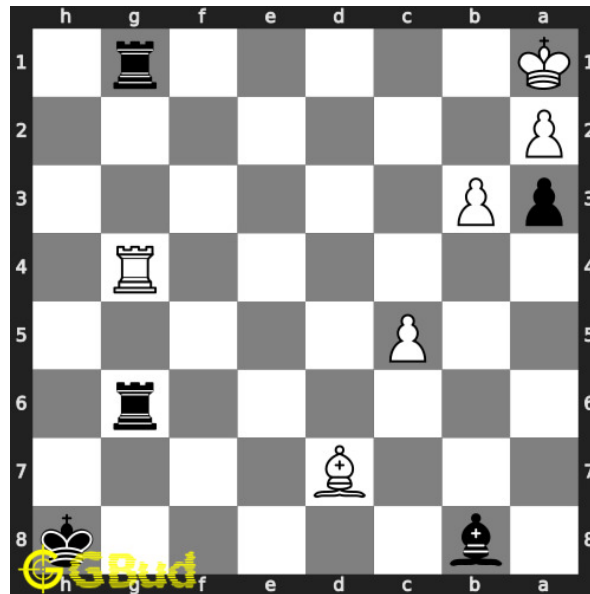


Figure 10: g1=R+

pawn in g file is promoted to a rook and gives check. this is a sacrifice and the rook forks the king and rook

Move 3 Move by white

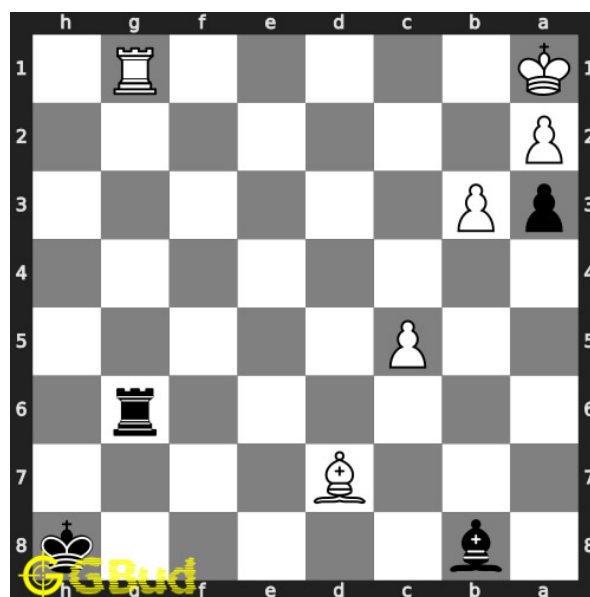


Figure 11: Rxg1

this is a zugzwang move as this forces opponent's rook to respond. opponent's rook captures your piece

Move 4 Move by black

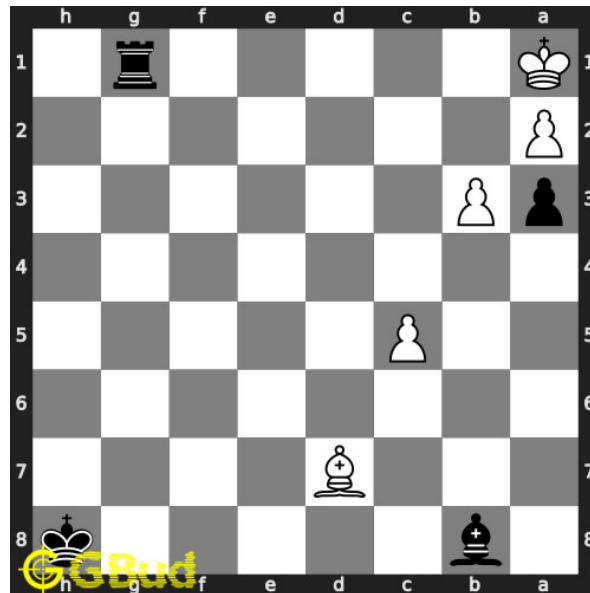


Figure 12: Rxg1#

your rook captures opponent's rook and checkmate. opponent's king can't come to b2 due to the attack from your pawn. this is how you can mate in 2 moves.

Right moves for the solution to the medium chess puzzle 0099

Based on the objective of the puzzle, you have to make the right moves. Following are the right moves

1. g1=Q+, Rxg1#
2. g1=R+, Rxg1#

Explanation for the moves

1. Rg4 - This is a mistake made by the opponent. They did not realise that their king has only one free squares to move
2. g1=Q+ - Pawn in g file file is promoted to a queen and gives check. This is a sacrifice and the queen forks the king and rook
3. g1=R+ - Pawn in g file file is promoted to a rook and gives check. This is a sacrifice and the rook forks the king and rook

4. Rxg1 - This is a zugzwang move as this forces opponent's rook to respond. Opponent's rook captures your piece
5. Rxg1# - Your rook captures opponent's rook and checkmate. Opponent's king can't come to b2 due to the attack from your pawn. This is how you can mate in 2 moves.
6. For right move - Good. you seized the opportunity and had a mate in 2 moves
7. For wrong move - You should have promoted the pawn and checkmate. Try again

Categories of medium chess puzzle 0099

This medium chess puzzle falls in these categories.

1. [Medium chess puzzles](#)
2. [Sacrifice puzzles in chess](#)
3. [Mate in 2 puzzles in chess](#)
4. [Endgame puzzles in chess](#)
5. [Fork puzzles in chess](#)
6. [Promotion puzzles in chess](#)
7. [Strategy puzzles in chess](#)
8. [Zugzwang puzzles in chess](#)
9. [Pawn puzzles in chess](#)
10. [Rook puzzles in chess](#)
11. [Queen puzzles in chess](#)

medium chess puzzle 0099 chart



Figure 13: medium chess puzzle 99 chart 1



Figure 14: medium chess puzzle 99 chart 2



Figure 15: medium chess puzzle 99 chart 3

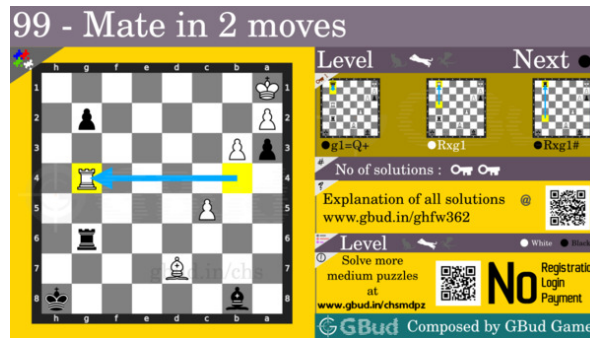


Figure 16: medium chess puzzle 99 chart 4

How to view the solution to medium chess puzzle 0099

To view the [solution to this puzzle](https://gbud.in/ghfw362), follow the steps given below

1. Go to the [puzzle page](https://gbud.in/ghfw362)
2. Click the solution button (Key as shown [below](https://gbud.in/ghfw362)) to view the solution

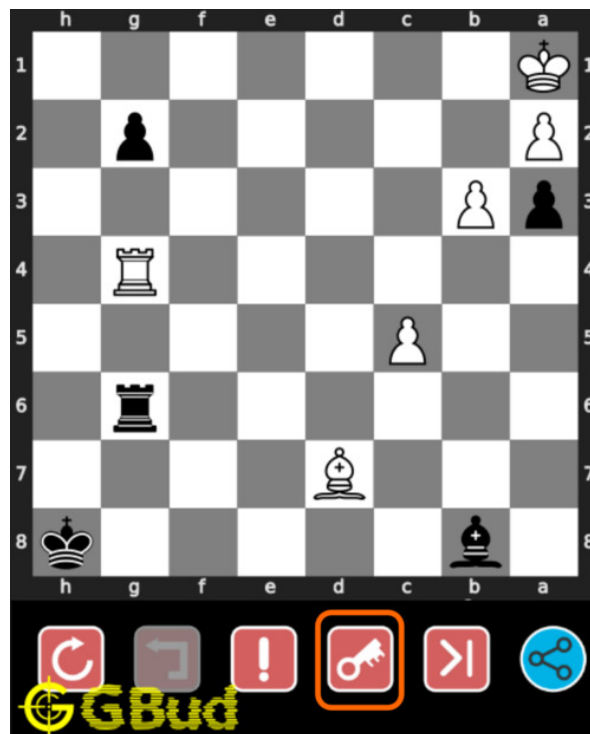


Figure 17: Click the solution button to view solutions @ <https://gbud.in/ghfw362>

How to get help for moves in the medium chess puzzle 0099

To get help or the possible next moves in the puzzle, , follow the steps given below

1. Go to the [puzzle page](#)
2. Click the help button (exclamation mark as shown [below](#)) to get help or suggestion on next possible [move](#)



Figure 18: Click the help button to get help on next move @ <https://gbud.in/ghfw362>



Figure 19: [Solve more medium puzzles @ https://gbud.in/chsmdpz](https://gbud.in/chsmdpz)



Figure 20: [Solve other puzzles @ https://gbud.in/chsgppz](https://gbud.in/chsgppz)

Play chess for free

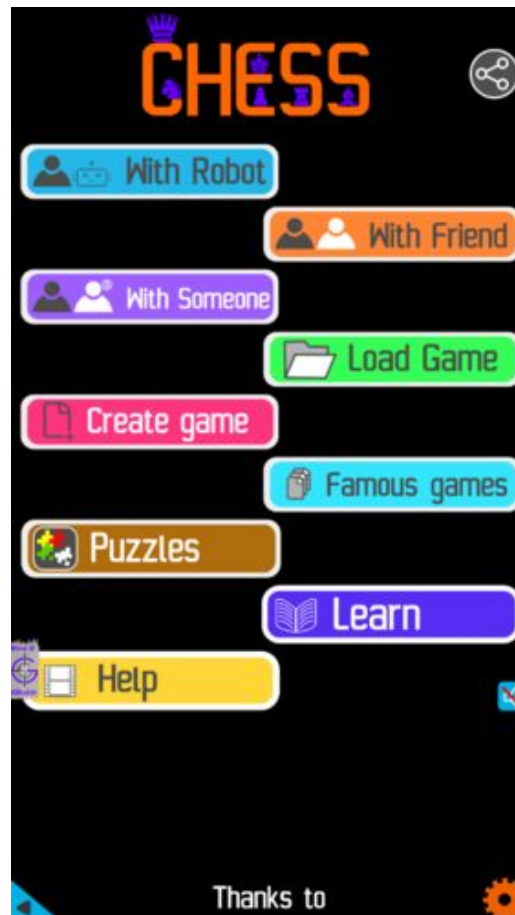


Figure 21: Play chess online for free. Solve puzzles and play with friends

Play chess for free at <https://gbud.in/chs>

We present you a platform to play chess online with friends for free. No need to install any app. You can play chess for free without registration or login.

Simple. You can do several chess related activities.

1. [solve chess puzzles](#)
2. [learn about chess](#)
3. [play chess with computer](#)
4. [play chess with friend](#)
5. [create your own chess games](#)

6. [fen viewer](#)
7. [fen editor](#)
8. [fen generator](#)
9. [pgn viewer](#)
10. [chess board editor](#)
11. [view famous chess games.](#)



Figure 22: Solve this puzzle online by scanning this QR code or go to the link below

<https://gbud.in/ghfw362>

Read the latest article on Medium Chess puzzle # 0099 - Mate in 2 moves by scanning this QR code or click the link

Previous article : « [Medium Chess puzzle # 0098 - Mate in 2 moves](#)

Next article : [Medium chess puzzles](#) »

[Back to top](#)

[Contact Us](#)